

## RAYS ONLINE

We strive to provide educational excellence with a difference. Our aim is to provide quality education to achieve career success with professionalism. We help students to recognize their potential and facilitate them with the best educational tools, and methodologies. Our vision is of a world where every learner can access education to unlock their potential.

### COURSES OFFERED

#### ONLINE PRACTICE EXAM SERIES 2023 NEET/JEE/KEAM

\*Module Exams \*Model Exams \*Rank List \*Hints & Solutions

#### XI, XII ENTRANCE ORIENTED TUITION

For all Keralites Across the Globe

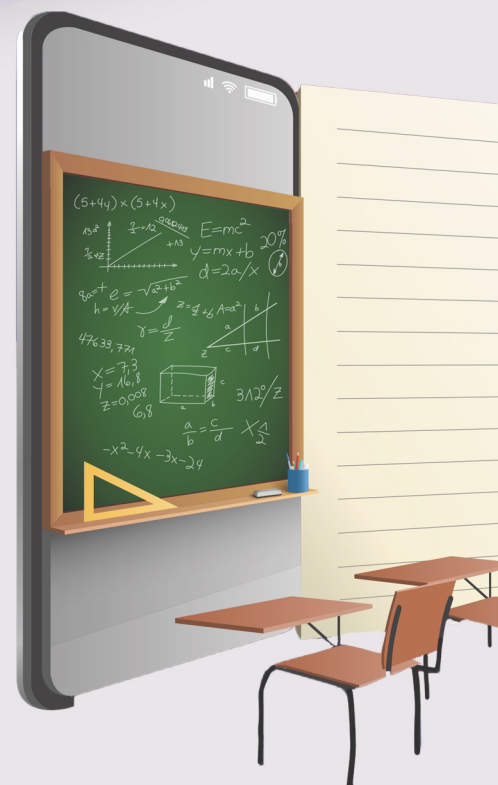
Classes by Teachers who handle class room coaching at Rays, Monitoring by Class Teachers of Rays, Regular Online Exams & Doubt Clearance, Explanation of Online Exam Questions, Online Home Assignments, Evaluations.

#### ONLINE MED/ENGG CRASH 2023

Courses Include Classes by Expert Teachers of Rays Online Exams. Doubt Clearance & Rank Lists

#### 1 YEAR REPEATERS PROGRAM FOR NEET & JEE ASPIRANTS

Offering the best medical entrance exam coaching for students appearing for Competitive Exams



## RAYS ONLINE PLUS ONE TUITION + ENTRANCE

TOTAL FEE (Rs: 15,500+GST) = Rs 18,290/-

ADMISSION FEE	REGISTRATION FEE	STUDY MATERIALS	COURSE FEE
500	5,000	E-COPY OF MATERIALS FREE	10,000
Non-Refundable	Non-Refundable	Non-Refundable	

\*18% GST additional applicable on all the fees mentioned.

1 <sup>st</sup> installment (@ the time of admission)	Rs 10,500+GST (5,000+5,500)
2 <sup>nd</sup> installment (60 days after commencement of class)	Rs 5,000+GST (5,000)

## PLUS TWO TUITION + ENTRANCE

TOTAL FEE (Rs: 15,500+GST) = Rs 18,290/-

ADMISSION FEE	REGISTRATION FEE	STUDY MATERIALS	COURSE FEE
500	5,000	E-COPY OF MATERIALS FREE	10,000
Non-Refundable	Non-Refundable	Non-Refundable	

\*18% GST additional applicable on all the fees mentioned.

1 <sup>st</sup> installment (@ the time of admission)	Rs 10,500+GST (5,000+5,500)
2 <sup>nd</sup> installment (60 days after commencement of class)	Rs 5,000+GST (5,000)

## REPEATER ONLINE

TOTAL FEE (Rs: 22,500+GST) = Rs 26,550/-

ADMISSION FEE	REGISTRATION FEE	STUDY MATERIALS	COURSE FEE
500	5,000+GST	E-COPY OF MATERIALS FREE	Rs: 17,000 (Excl materails)
Non-Refundable	Non-Refundable		

HARD COPY OF THE STUDY MATERIALS COSTS RS 15,000+GST CAN BE PURCHAESD WITH A DISCOUNT, AT 9,000+GST

### REFUND POLICY OF RAYS ONLINE BATCHES

Within 15 days after the Registration of the programe: **Full REFUND** (Except admission amount of 500+GST)

After 15 days from the Registration : **No REFUND**